



# BT-Pusher WiFi Marketing Device User Guide

Version 1.0.0



**DeviceGate Technology Co.,Ltd**

Web <http://www.BT-Pusher.com>

<http://www.BT-Pusher.com.cn>

Add Room 4032,HaoJing Building,NO.9 DaGangGongYe Road,  
TianHe , GuangZhou, GuangDong, China

Mail [Sales@BT-Pusher.com](mailto:Sales@BT-Pusher.com)

Tel 0086-20-82317785, 0086-20-82317786

Fax 0086-20-62201638

# Content

1	Introduction.....	3
1.1	Overview.....	3
1.2	Function.....	3
1.3	Application.....	4
1.4	Features.....	5
1.5	Package Contents.....	5
2	Installation.....	7
2.1	BT-Pusher WiFi Marketing Device Interface Specification.....	7
2.2	User Guide.....	8
2.2.1	Power.....	8
2.2.2	FLASH DISK Local Management.....	10
3	Warranty Information .....	15

# 1. Introduction

## 1.1 Overview



WiFi Marketing is a new and effective marketing method, BT-Pusher WiFi Marketing device can Push advertisements pages to Smartphones, laptops or Notebook (As iPhone, iPad and so on). You can update advertising Photo or web pages to WiFi Marketing Device via flash disk, When the users of Smartphones and laptops connect to your WiFi Marketing device (Access Point), They can not have any online behavior (even IM application) before they view your Advertising Pages

## 1.2 Function

- 1: StandAlone Work Function
- 2: Support build-in WebSite
- 3: Support DHCP Client and Server
- 4: Support Abnormal automatic recovery function
- 5: Show Device working status using LED
- 6: Transmission distance: up to 200 meters
- 7: Support Redirect to build-in website


- 8: Support Redirect to any internet website
- 9: Must View advertising Page before Any online behaviors
- 10: A variety of WiFi advertising methods
- 11: Support 802.11n, 802.11g, 802.11b wireless protocol
- 12: Download Speed up to 150Mbps.

## 1.3 Application

- Shops and In-store Promotions
- Restaurants and coffee shops
- Tourist areas
- Airports
- Transportation
- Auto 4S shops
- Motor City
- Housing Sales Center
- Exhibitions
- Business center / shopping mall
- Hotels
- Sport events
- Auto parts sales shop
- Repair stations
- Cinemas
- Recreation centers

**Even you can think of any place, almost everywhere**

## 1.4 Features

Model	BT-Pusher WiFi Marketing Device
Appearance	
Status indication	LED status indication
Size	9cm*9cm*3cm(no include antenna)
Weight	200g
Power Input	110-240V
Storage	Above 128M Byte, expanded to 1G Byte
Antenna	External antenna(default 6db)
WiFi type	802.11n,802.11g,802.11b
Download speed	Up to 150Mbps
Usb interface	Yes
Ethernet	10/100 Ethernet
Abnormal automatic recovery function	Yes
Managment method	USB Flash disk local

## 1.5 Package Contents

Each BT-Pusher WiFi Marketing package include:

- 1, A BT-Pusher WiFi Marketing Device with 6dbi external antenna

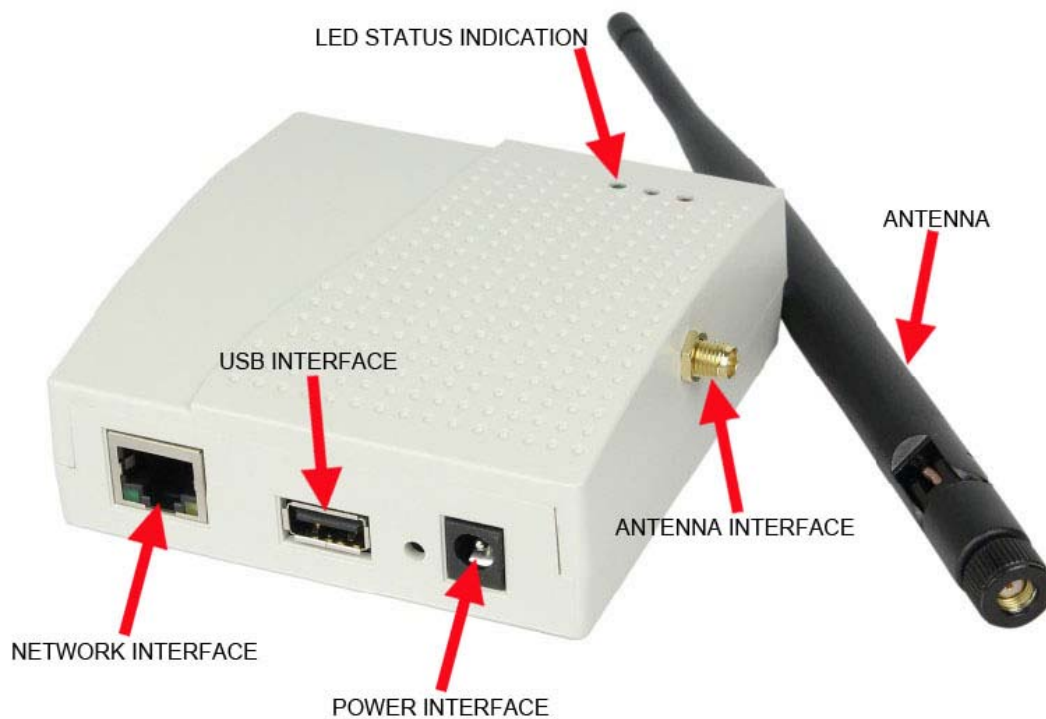


- 2, A adapter (Appearance for reference only)



## 2. Installation

### 2.1 WiFi Device interface specification



- **LED:** Indicate the working status of the BT-Pusher WiFi Marketing device
- **POWER INPUT:** DC 12V 1A power adapter
- **USB INTERFACE:** Used to connect flash disk for offline management. Please use **WiFiConfig** software to modify corresponding parameters or update Ads pages and make sure to save the results to a flash disk, then insert the flash disk into the relevant BT-Pusher WiFi Marketing Device's USB interface, the system will automatically set the device parameters, update Ads pages and so on. (After you insert a flash disk, please make sure LED show a status described in section 2.2.2)
- **NETWORK INTERFACE:** Used to connect to your local network(Router or Switch)

## 2.2 User Guide

### 2.2.1 Power

1. Put BT-Pusher WiFi Marketing device in a safe place, Connect Antenna to its antenna interface, use network cable connect BT-Pusher WiFi Marketing device to your Router or Switch and Plug power adapter (DC 12V) in the power interface,

As shown below:

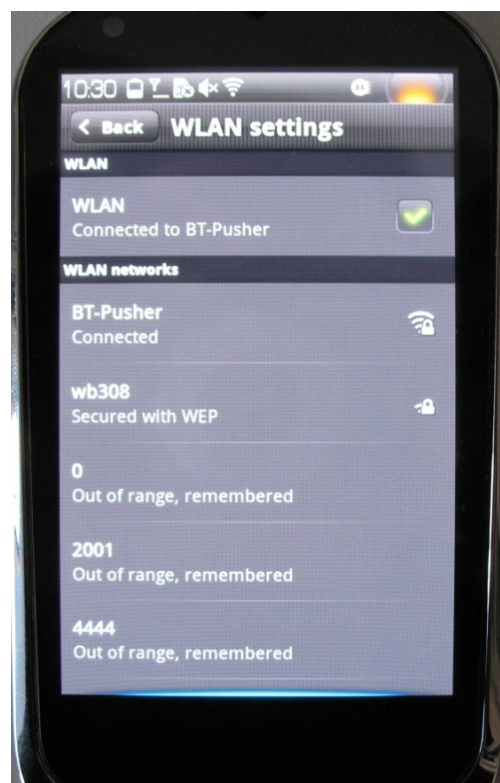
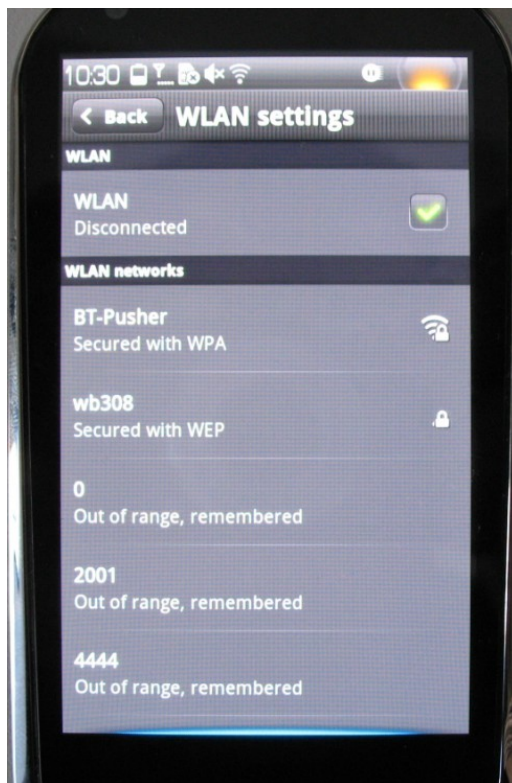


2. After power-on, LED will indicate the system status information, as follows

- (1) Red LED and middle Green LED light. Indicates power supply normal



- (2) After about one minute ,Middle Green LED will flash rapidly,This means BT-Pusher WiFi marketing Device started to enter the normal work state, Then your WiFi enabled device as iphone ,ipad, notebook will can scan and conenct to BT-Pusher WiFi Marketing Device, and this will let you begin your internet surfing. Enjoy it....





3. But You can not have any online behavior yet(Even IM,Bolg application and so on)

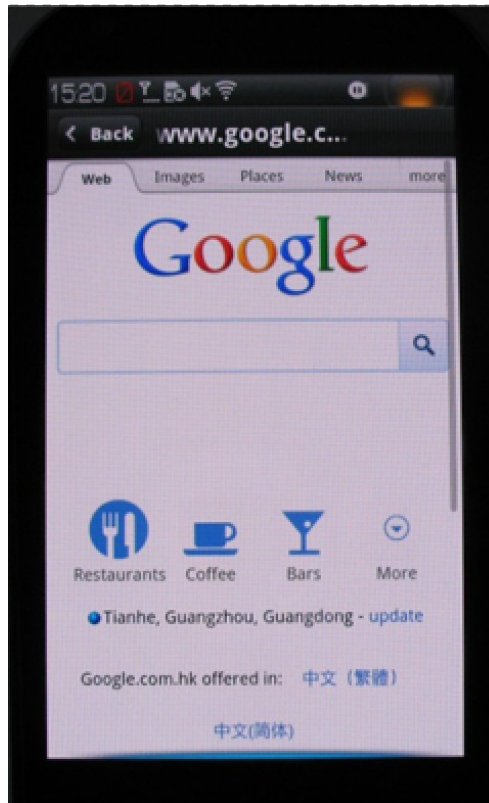
before they view your Advertising Pages. As below:



4. There is one "Hyper-Link" in last advertising Page, You can click last Advertising page photo go to special internet Advertising WebSite, Even Build-in WebSite in BT-Pusher WiFi marketing device's internal storage . if you click "Hyper-Link" in last advertising page, You have to view Special advertising web page, as your corporate website and so on, As Below



5. if you click "Continue" in last Ads page, You will be directed to the site you want to surf(We assume that you want to [www.google.com](http://www.google.com) before you view advertising page ).as below:



6. then you can begin your IM chat, web surfing..... Enjoy it!!

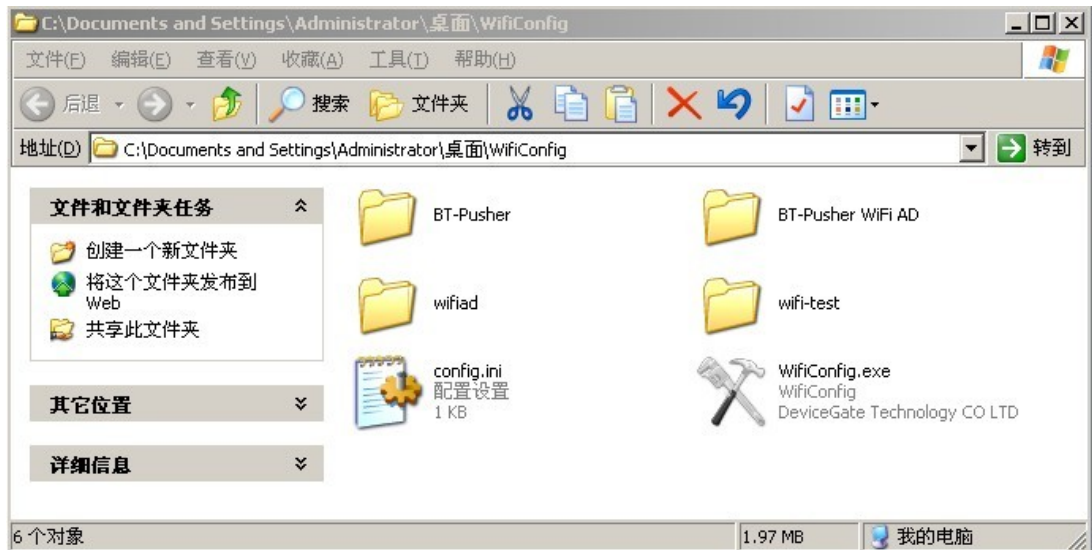
if you want to change your Ads page content, Build-in website and config system parameter, please use WiFiConfig software to do it .

## 2.2.2 FLASH DISK Local Management

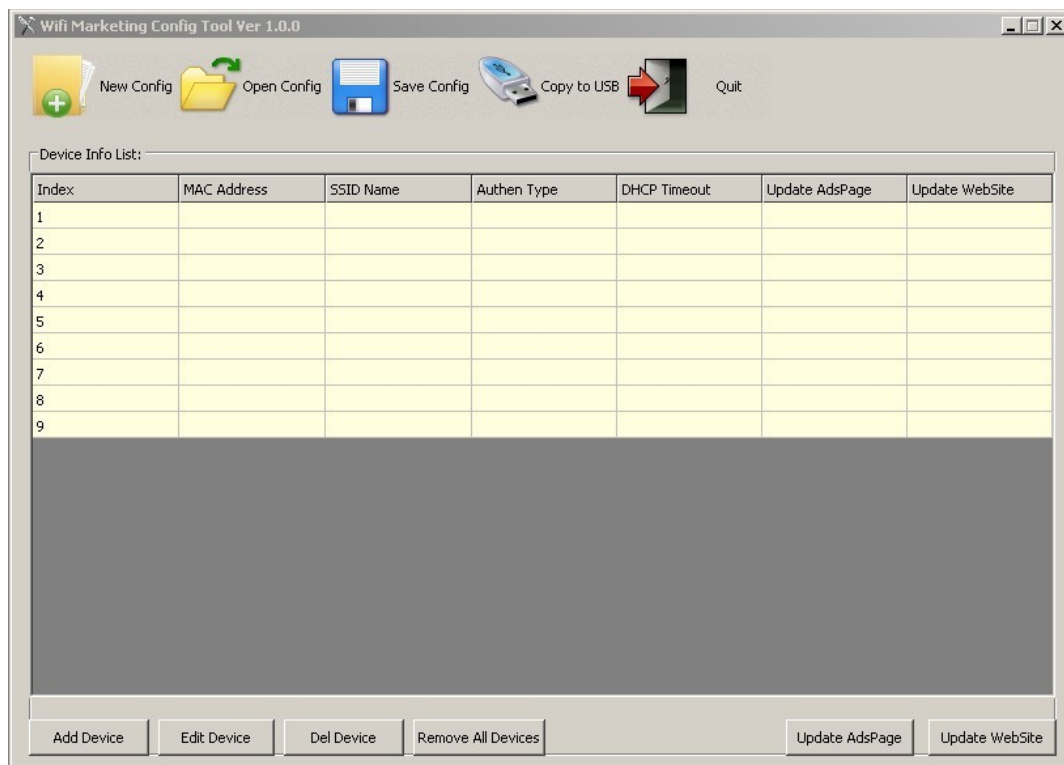
BT-Pusher WiFi Marketing Device has flash disk local management functions, through flash disk operation can update the system configuration information, modify the Ads pages content, upload build-in website and so on.

1: Need to use the **WiFiConfig** configuration software for the relevant operation.

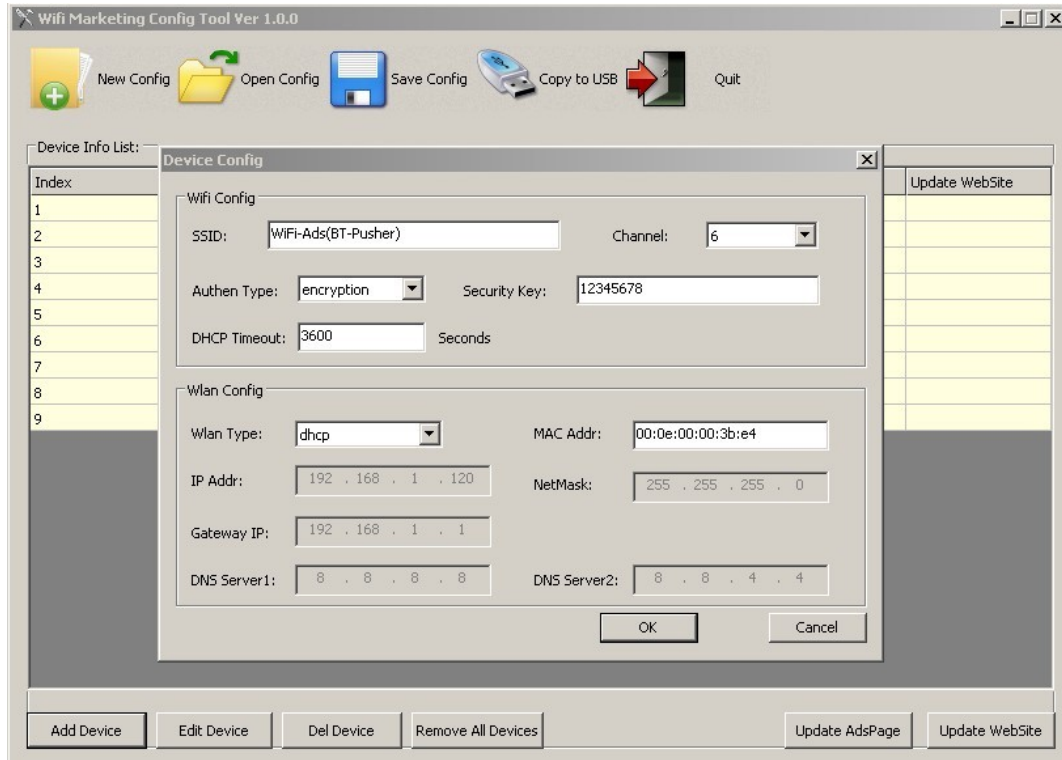
**WiFiConfig** software on **WiFiConfig** directory:



- (1) Double-click to open **WiFiConfig.exe** software, will appear below the window, first click on the “new config” to build a new project, and then according to your needs to configure your device.



- (2) Second, click “Add Device”, as shown below:



**Please refer to document “WiFiConfig software User Guide” for more detailed operation**

2: After Using **WiFiConfig** software to modify corresponding parameters or update Ads pages contents ,Please make sure to save project and Copy to flash disk,then insert the flash disk into the relevant BT-Pusher WiFi Marketing Device’s USB interface, the system will automatically set the device parameters, update Ads pages contents and Copy your website to BT-Pusher WiFi marketing device's internal storage and so on. as shown below:



- (1) After Flash disk inserted, BT-Pusher WiFi marketing device's another green LED will flashes once every half a second, as shown below, indicates device being updated:



- (2) When the last green LED stop flashing, And middle Green led will continue to flash rapidly, indicating update has been completed, the system will re-enter the normal working state, **Only when it is normal working state ,you can unplug the Flash disk from USB interface.**



## 2.3 Installation Notes

1. Away from the high-temperature place.
2. To avoid direct sunlight.
3. Do not put damp places, to avoid the water.
4. Do not place other equipment above BT-Pusher WiFi Marketing device.
5. Bt-Pusher WiFi Marketing device should be installed in a well-ventilated place

### **3 Warranty Information**

DeviceGate guarantees BT-Pusher products are free of defects for a period of 12 months from the date of purchase. This warranty is non-transferable and applies to the original purchaser. BT-Pusher products found to be defective will be replaced free of charge. Purchaser is responsible for all shipping costs. For returns and warranty claims, Purchaser must first obtain a return authorization number by sending an email to [BT-Pusher@devicegate.com](mailto:BT-Pusher@devicegate.com) Returns or Warranty claims without a return authorization number will not be accepted.

**Thank you for choosing BT-Pusher device!**

**Please visit our website**

**<http://www.BT-Pusher.com>**

**For more detailed**